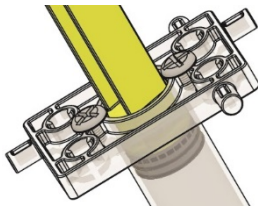


You can choose to fill your cylinders with either water or air. Water allows for smoother operation, while air is more abrupt (and easier).

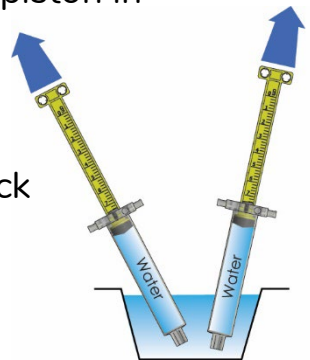
For air-filling instructions, see the [Powered Pets Go Guide](#).

- 1** Insert two cylinder screws into each cylinder to prevent the pistons from pulling out (if you didn't already).

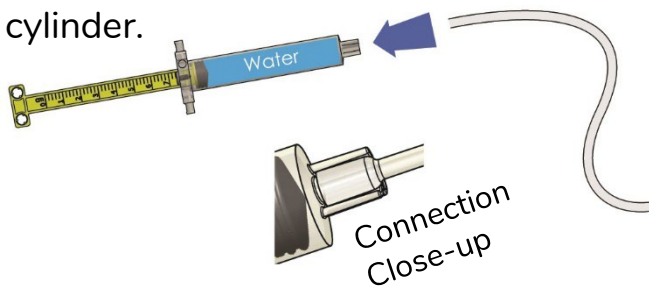


- 2** Fill both cylinders with water:

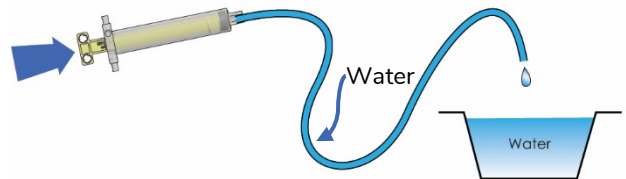
- A.** Push cylinder piston in
- B.** Place cylinder tip underwater
- C.** Pull piston back to completely fill with water



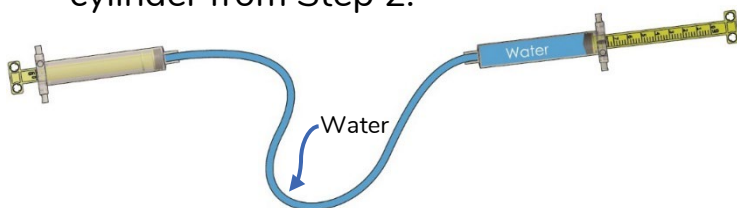
- 3** Attach tubing to just one filled cylinder.



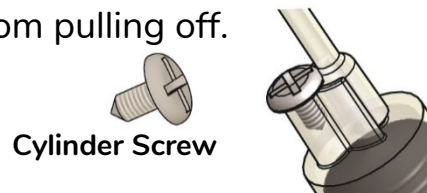
- 4** Fill the tubing completely with water by pushing the piston completely in.



- 5** Attach the water-filled tubing to the remaining water-filled cylinder from Step 2.



- 6** Insert a cylinder screw in each cylinder to prevent the tubing from pulling off.



Your cylinders are filled! You can get back to making your pet.