

KINETIC SCULPTURE CHALLENGE

GEARS TINKER SET



Design and build a kinetic sculpture with your gears and pulleys tinker set!

Kinetic Energy is energy in motion. With your gears, you can harness this energy to power animated sculptures, making art that moves.



Classroom Overview and additional documents available at teachergeek.com/gears

COMPONENTS

TeacherGeek Parts:



Strips (2x)
30cm(12in.)
SKU 1821-31



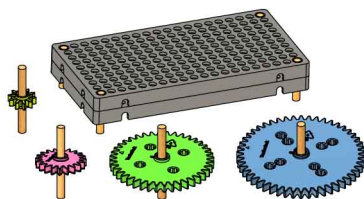
Dowels (5x)
30cm(12in.)
SKU 1821-32



Blocks (10x)
SKU 1821-34



Slide Stop (1x)
8cm(3in.)
SKU 1821-49



"Built" Gears Tinker Set
Build your Tinker Set using the [Set-Up Guide](#). Get it at teachergeek.com/gears

Sculpture Materials:

Clay
Pipe Cleaners
Paper
Tape
String
Recycled Materials

INTERACTIVE ART

Art looks beautiful or makes you feel emotion. Use gears to make your art interactive!



The shapes in this sculpture are pleasing to look at and fun! Turn the gears to make them spin and swing.



The leaves in this sculpture rustle when the gears are turned – it feels like a relaxing fall day.

KINETIC SCULPTURE CHALLENGE

GEARS
TINKER SET

TeacherGeek

STORY TELLING

Recreate a scene from
your favorite story or
write your own tale!



"Buzz, buzz,"
Buzzed the bee.
Finding flowers;
Making honey.



Rock-a-bye Baby
on the tree top.



...And down will come Baby,
cradle and all.



Peter Penguin passes
the puck to Pauly.
He shoots; he scores!

TIPS

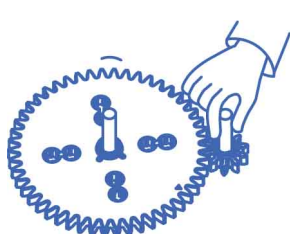
It's all about the motion! Experiment with:

Speed



FAST

Big input gear,
small output gear.



SLOW

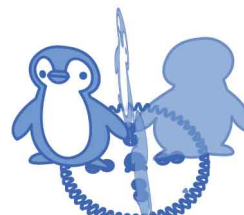
Small input gear,
big output gear.

Movement



SPINNING

Penguin in
the middle.



CIRCLING

Penguin on
the outside.



JITTERING

Penguin anywhere!
Move the gear
back and forth.